



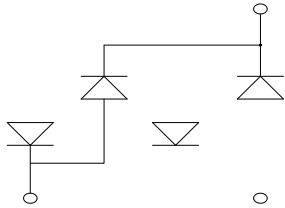
Bridge Rectifiers

Features

- " 8/ UHFRJQILVHRQ
- " *ODVV SDVVLYDWHG FKLS MXQFWLRQ
- " +LJK VXUJH FXUUHQW FDSDELQW\
- " 6ROGHU GLS y & SPDJ -(6' %

Typical Applications

*HQHUDO SXUSRVH XVH LQ \$& ' & EULGJH IXO
 IRU 6036 OLJKWLQSWEDDOEDWVWHGDFKDUJHU
 DSSOLDQFHVTXRSRFRQW DQG WHOHFRPPXQLF
 DSSOLFDWLRQV



Mechanical Data

- " Package ' % /
 0ROGLQJ FRPSRQWPHHODPPDELQW\
 UDWLQJ 5RDOWRPSOLRJKHQIUHH
- " Terminals 7LQ SODWHG OHDGV VROGHUDEOH S
 - 67' DQG -(6' %
- " Polarity: \$V PDUNHG RQ ERG\
 0D[LPXP 5HSHWLWLYH 3HDN 5HSHUWH 9ROWDDHLPXP 5HD6\$B'ROWDJH 9

Maximum Ratings

PARAMETER	SYMBOL	UNIT	DBL101	DBL102	DBL103	DBL104	DBL105	DBL106	DBL107
'HYLFH PDUNLQJ FRGH			' % /	' % /	' % /	' % /	' % /	' % /	' % /
0D[LPXP 5HSHWLWLYH 3HDN 5HSHUWH 9ROWDDHLPXP 5HD6\$B'ROWDJH 9									
0D[LPXP ' & EORFNLQJ 9ROWDJH' &		9							
\$YHUDJH UHFWLILHG RXWSXW FXUUHQW # +] VLQH ZDYH 5 ORDG 7F		\$							
)RUZDUG 6XUJH &XUUHQW 1RQ UHSHWLWLYH # +] +DOI VLQH ZDYH - F\FOH 7M		\$							
)RUZDUG 6XUJH &XUUHQW 1RQ UHSHWLWLYH # PV VTXDUH ZDYH - F\FOH 7M		\$							
&XUUHQW VTXDUHG WLPH # PV"W" PV 7M5DWLQJ RI SHU GLRGH \$ V		\$ V							
6WRUDJH WHPSHUDWXUH	7VWJ	-				a			
-XQFWLRQ WHPSHUDWXUH	7M	-				a			

Electrical Characteristics

PARAMETER	SYMBOL	UNIT	TEST CONDITIONS	DBL101	DBL102	DBL103	DBL104	DBL105	DBL106	DBL107
0D[LPXP LQVWDQW DQHRXV IRUZDUG YROWDJH GURS SHU GLRGH \$		\$								
0D[LPXP ' & UHYHUVH FXUUHQW 7M - DW UDWHG ' & EORFN, QJ YROWDJH SHU GLRGH			7M - 7M -							
7\SLFDO MXQFWLRQ FDSDFL WDOGHSSO&MG 5HSHUWH 9ROWDJH RI 9 ' &			0HDVXUHG DW 0+] DQG FSSO&MG 5HSHUWH 9ROWDJH RI 9 ' &							



DBL101 THRU DBL107

Thermal Characteristics

PARAMETER	SYMBOL	UNIT	DBL101	DBL102	DBL103	DBL104	DBL105	DBL106	DBL107
7 \ S L F D O 7 K H U P D O 5 H 5 L V / W D Q F H :	5 - \$								
	5 - &								

1 R W H ' H Y L F H P R X Q W H G R Q 3 & % Z L W K P P P P

Ordering Information (Example)

PREFERED P/N	PACKING CODE	UNIT WEIGHT(g)	MINIIMUM PACKAGE(pcs)	INNER BOX QUANTITY(pcs)	OUTER CARTON QUANTITY(pcs)	DELIVERY MODE
'% / a '% /	%	\$ S S U R [L P D W H				

7 X E H

Characteristics (Typical)

